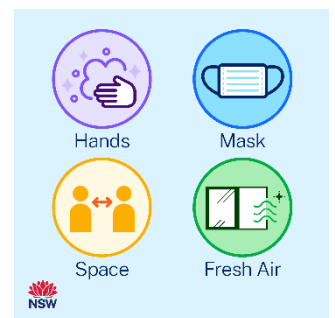


Tuesday 26 April 2022

Dear Parents and Carers,

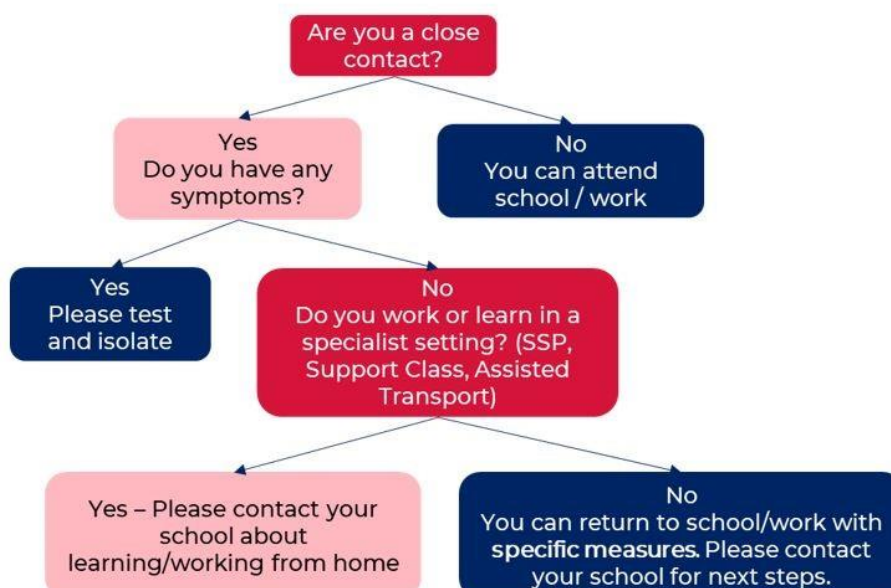
Welcome to the start of a new term.

Our school will continue to enforce our layered COVID-smart measures, including vaccinations, maximising natural ventilation in learning spaces, continued good hand hygiene practices and enhanced cleaning to ensure the safety and wellbeing of our students and staff.



COVID-19 Close Contact changes

- Isolation requirements for close contacts have changed. Students and staff can return to school as long as they have **NO SYMPTOMS** and follow the [close contact guidelines](#), including daily rapid antigen testing (RAT) and wearing a mask indoors.
- Additional supplies of **RAT kits** will be distributed to all schools to support staff and students identified as close contacts who are able to return to school. **These will be distributed to students Wednesday 27 April 2022.**
- NSW Health have updated the advice for students and staff [returning to school after testing positive for COVID-19](#) including the recommendation to wear a mask for an **additional 3 days after the 7-day isolation period.**



Close contacts attending school will need to adhere to the following in addition to the [NSW Health guidelines](#).

- They must notify the school if they are intending to return under this provision.
- They should conduct a daily rapid antigen test (RAT) and return a negative result each morning before attending school for 5 school days.
- They must wear a mask indoors except when eating or exercising.
- No student or staff member identified as a close contact will be permitted to participate in overnight excursions, including school camps.
- Any visitor to a school site who is a close contact is required to advise the school that they are a close contact before they come on site. These visitors should conduct a daily RAT and return a negative result before attending. They must also wear a mask indoors at all times. Schools should consider if the visit can be conducted virtually.



As a reminder, staff and students CANNOT attend school if they are showing ANY symptoms of COVID-19. These include fever, cough, sore throat, shortness of breath, runny nose, loss of smell/taste, muscle/joint pains, diarrhoea, nausea/vomiting, extreme tiredness, unexplained chest pain or conjunctivitis (eye infection).

Thank you again for your continued support.

Kind regards,

A handwritten signature in black ink, appearing to read 'D Santucci', written over a light blue horizontal line.

Ms D Santucci
Principal

